



European Research Council
Established by the European Commission

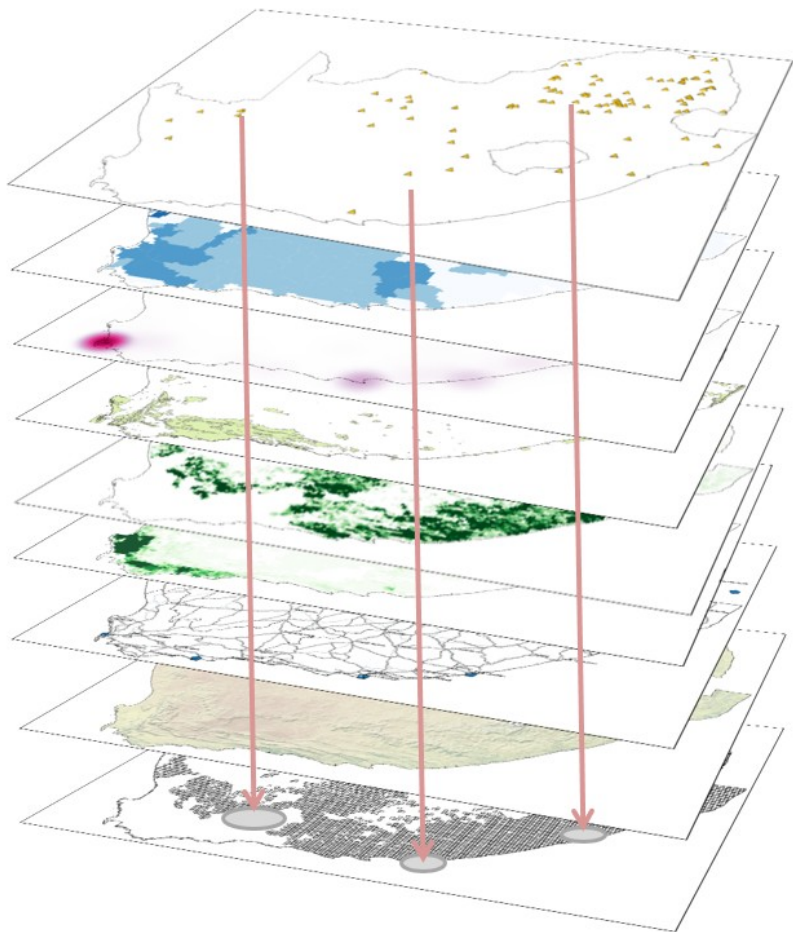


FINEPRINT

Using global crop maps to improve the estimation of
impacts associated with biomass production

Victor Maus, victor.maus@wu.ac.at
Institute for Ecological Economics, WU Vienna
01.03.2019

FINEPRINT multilayer analysis



Mining activities

Water depletion levels

Hotspots of social conflicts

Protected areas

Crop production and associated impacts

Infrastructure

Land cover

Geographic entities

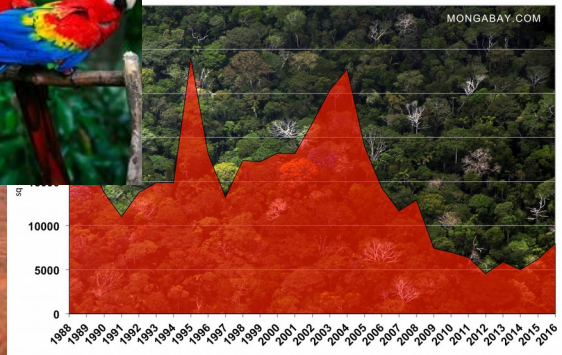
Local impacts of global supply chains



Photo: <https://theintercept.com/2019/02/16/brazil-bolsonaro-indigenous-land/>



Deforestation in the Brazilian Amazon, 1988-2016



Where exactly are biomass commodities produced and what are the associated impacts?

Available global crop maps

5 arc-minutes grid cell (~10 km x 10 km at the equator)

To name a few available data products:

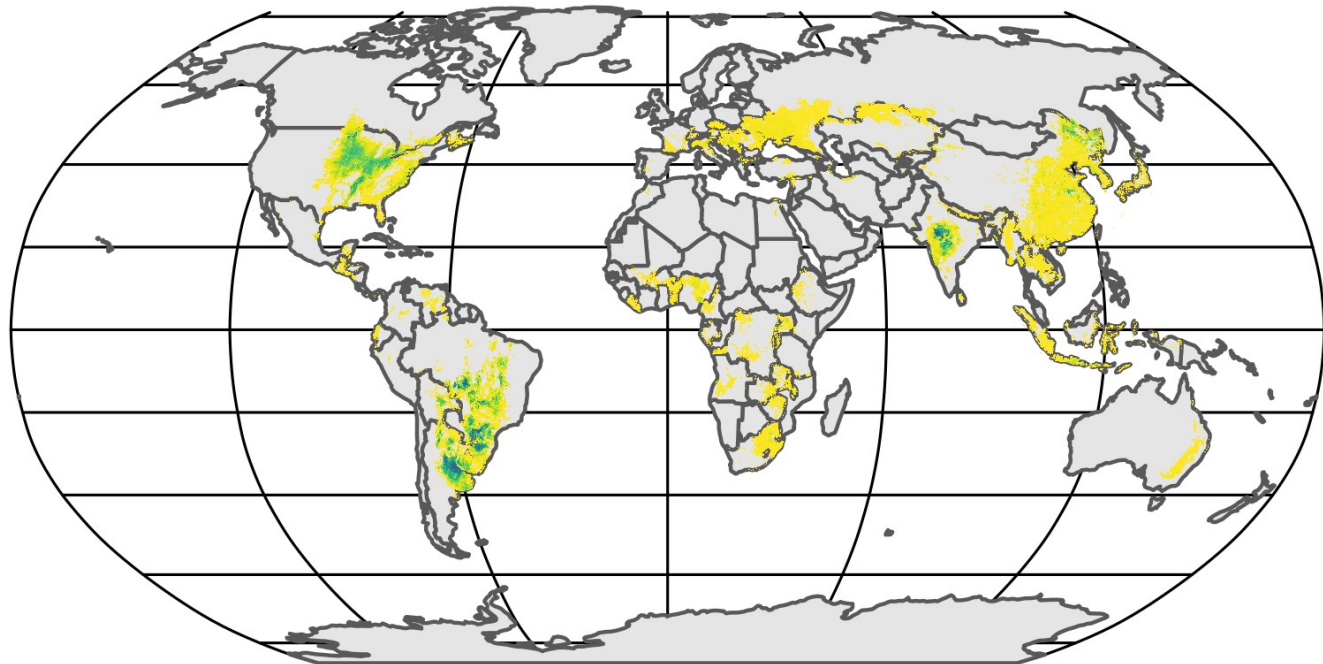
MapSpam: 2000, 2005, 2010 (42 crops)

GAEZ: 2000 (23 crops)

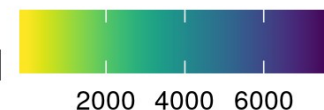
M3: 2000 (175 crops)

Limitations:

- Poor temporal coverage
- Inconsistent methodology over time (MapSpam)
- Does not allow direct land use change analysis



Harvested area of soybean in 2010 [Hectares]



Available global crop maps

5 arc-minutes grid cell (~10 km x 10 km at the equator)

To name a few available data products:

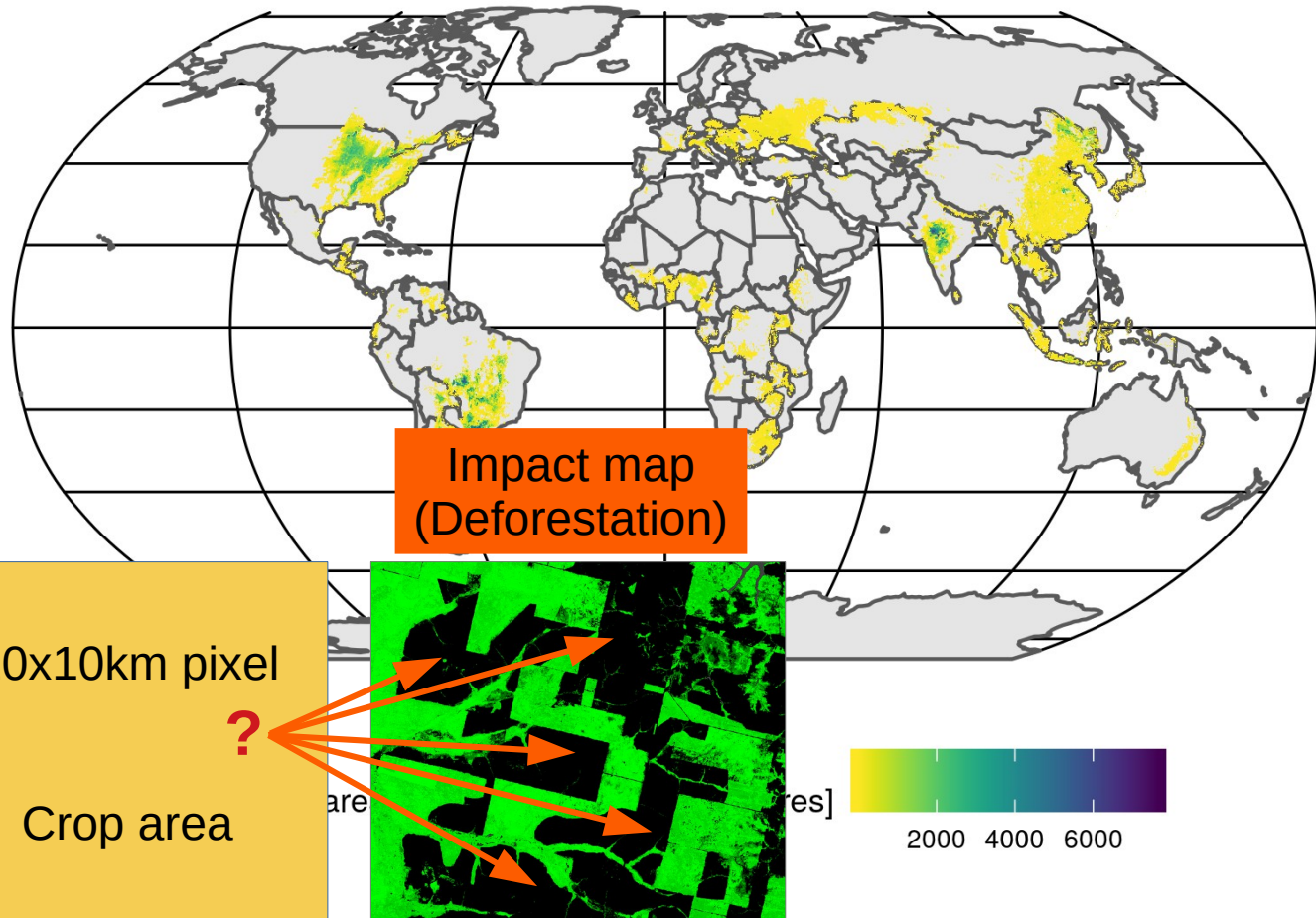
MapSpam: 2000, 2005, 2010 (42 crops)

GAEZ: 2000 (23 crops)

M3: 2000 (175 crops)

Limitations:

- Poor temporal coverage
- Inconsistent methodology over time (MapSpam)
- Does not allow direct land use change analysis



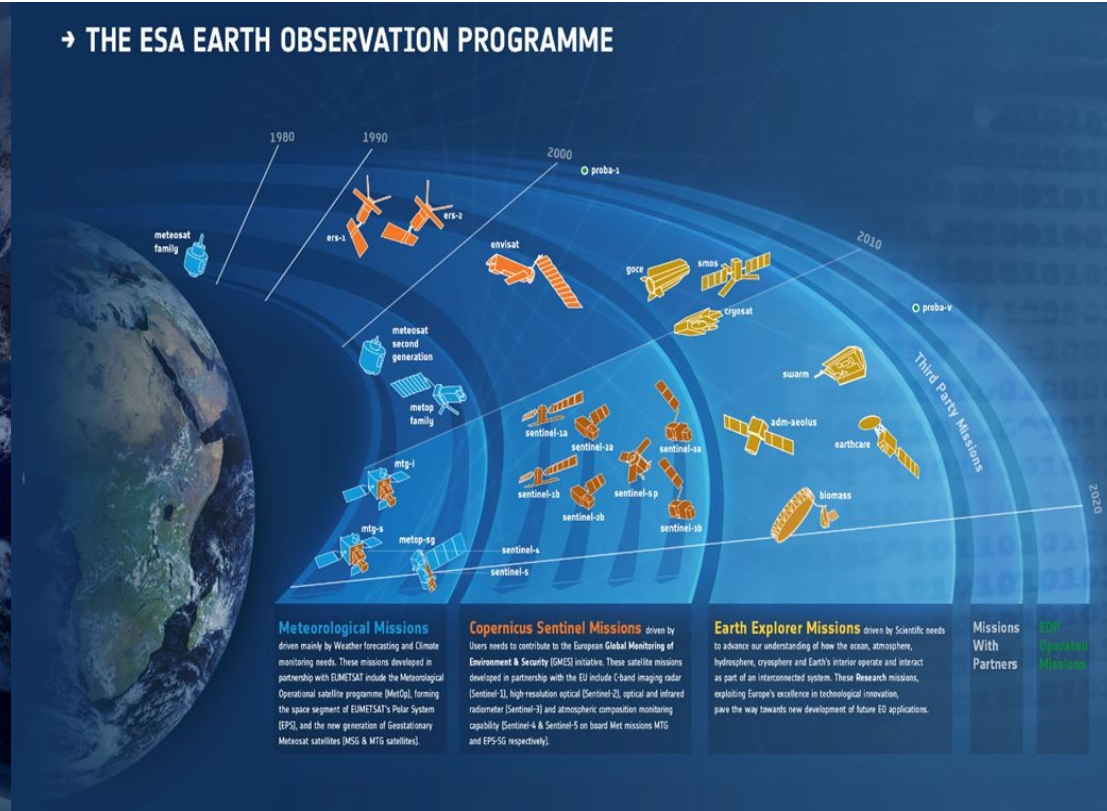
Earth Observation for Supply Chains



How to design a reliable and scalable methodology to improve impact assessments of biomass production?



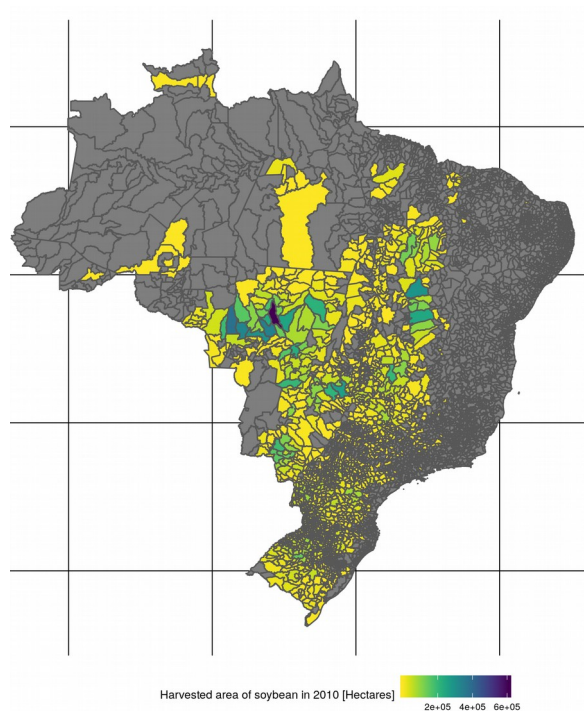
Openly available satellite data for crop mapping



To name a few sensors: Sentinel 1, Sentinel 2, Landsat 8, MODIS Terra and MODIS Aqua

Earth Observation for Supply Chains

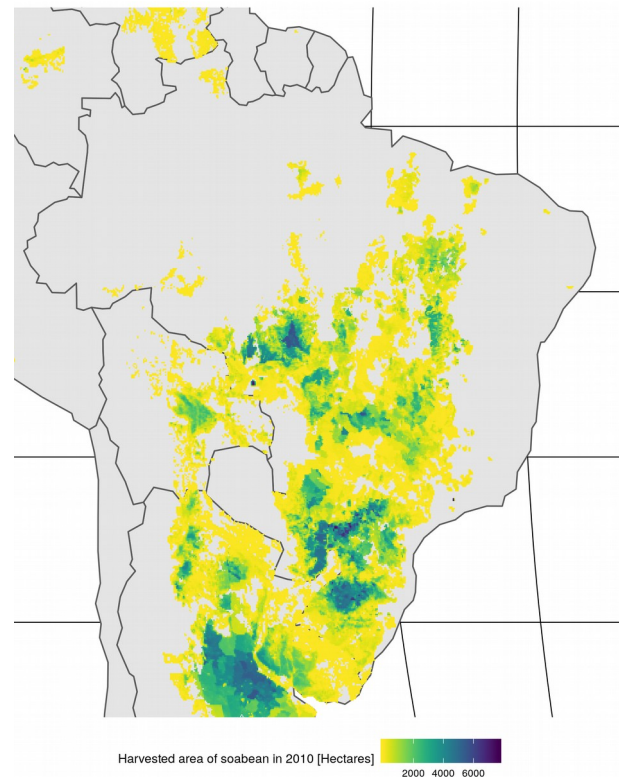
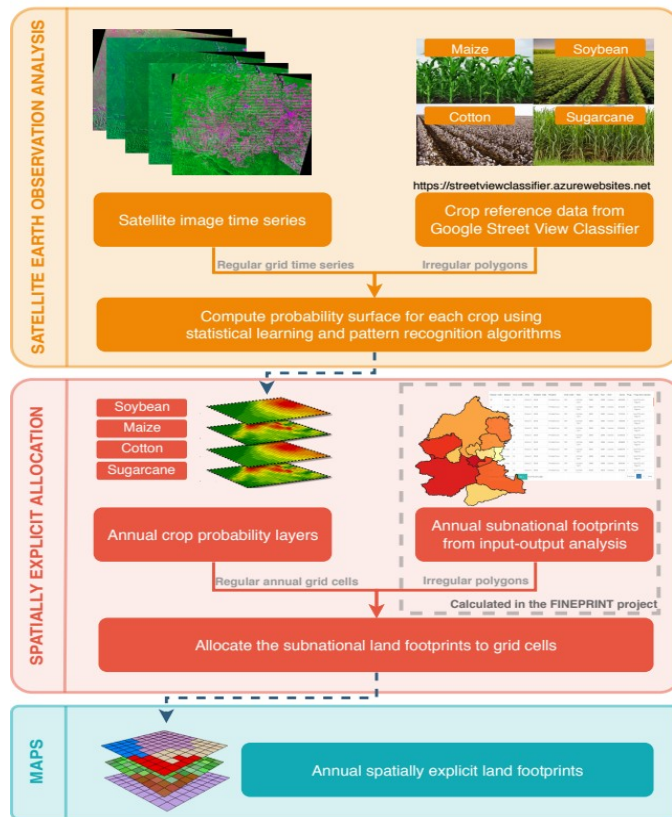
National or sub-national
Production and trade statistics



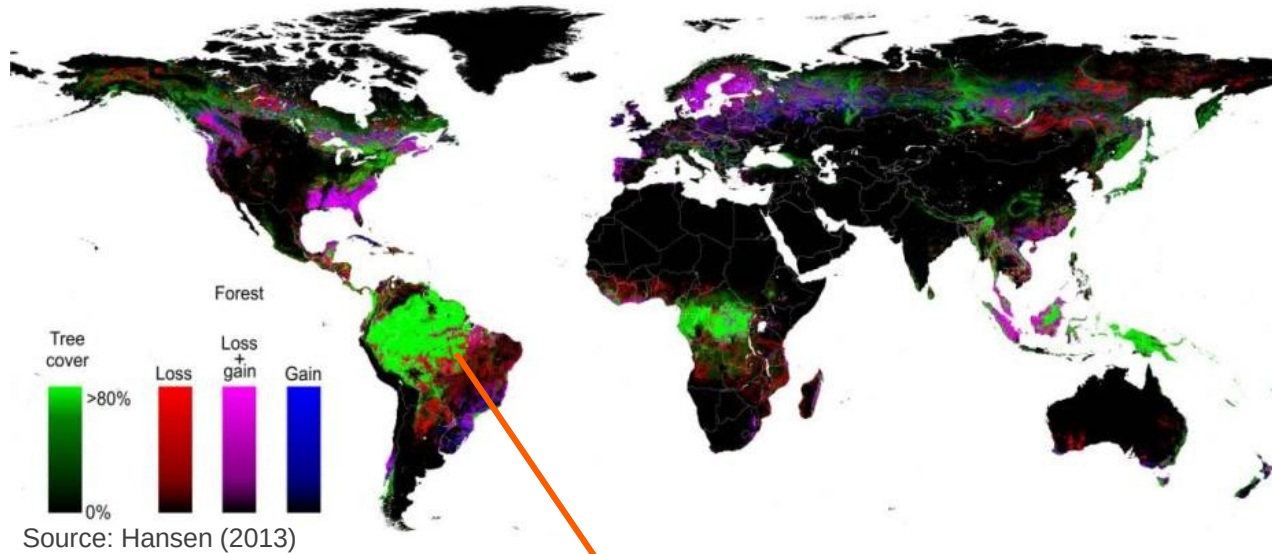
Data source: PAM IBGE (2019)



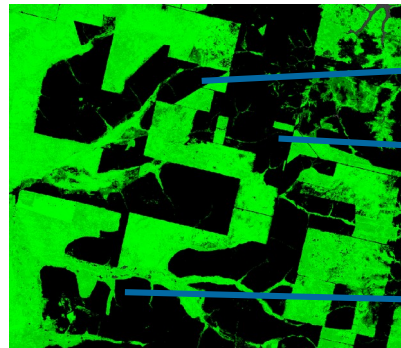
Yearly 250m crop maps



Spatially explicit production and impacts



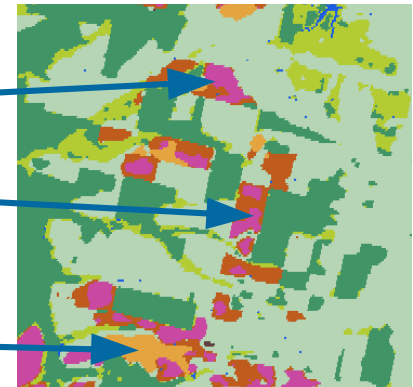
Spatially explicit impacts



Improved estimation of
impacts associated with
production of commodities



High resolution crop
distribution from satellite data





European Research Council
Established by the European Commission



www.fineprint.global

Dr Victor Maus, victor.maus@wu.ac.at
Institute for Ecological Economics, WU Vienna